



PARISH PROFILE

21/04/2017

Thank you for reading this parish profile.
We hope you will find it informative and useful.

Most of our important information is contained in the first 12 pages.
If you wish further detail please refer to the appendices.

Pictures are worth 1000 words. So please look on our website and our facebook page where there are many photographs illustrating church life and our buildings (in addition to those in this document).

CONTENTS

	PAGE
MISSION STATEMENT	2
THE CHURCH IN THE COMMUNITY	
<u>A brief history of the parish</u>	3
<u>Houston today</u>	4
OUR PRESENT	
<u>Membership</u>	6
<u>Worship</u>	6
<u>How we organise our affairs</u>	7
<u>Facilities</u>	8
<u>Organisations</u>	10
<u>Our relationship with our community and those further afield</u>	11
OUR FUTURE	12
APPENDICES	
<u>Appendix A – Worship</u>	14
<u>Appendix B – How we organise our affairs</u>	20
<u>Appendix C – Facilities</u>	26
<u>Appendix D – Organisations</u>	30
<u>Appendix E - Our relationship with our community and those further afield</u>	42
<u>Appendix F - Contacts</u>	46

MISSION STATEMENT

Our purpose is to be a witness to Jesus Christ through

- ❖ making worship central to the life of our congregation and parish
- ❖ developing faith in each other
- ❖ ensuring all feel welcome and supported in, and by, our church
- ❖ responding in practical ways to the needs of the congregation and the wider community.
- ❖ contributing to the work of the national Church at home and abroad
- ❖ spreading the Good News in our community

THE CHURCH IN THE COMMUNITY

A brief history of the parish

The Kirk is the beating heart of the community and its development is indelibly linked to that of the village.

Houston Kirk was completed in 1875 and is believed to be the third building on this site, with earlier buildings dating back to the 8th and 18th centuries. The Church is designated a Grade B Building by Scottish Heritage and contains Grade A effigies of Sir Patrick Houstoun and Lady Agnes Campbell, dating from the 15th century.

1771 was a momentous year with the uniting of the parishes of Houston and Killellan. Although the Killellan building was then abandoned, we still meet in its old kirkyard on the first Sunday evening in July. The bell from that church was probably cast in the 12th or 13th century and after a varied history including being recast twice, it now has pride of place in the current Kirk, and is rung at the two services previous to the one held outdoors at the old Kilallan Kirk,



The restored old Kilallan Kirk



The old Kilallan Bell

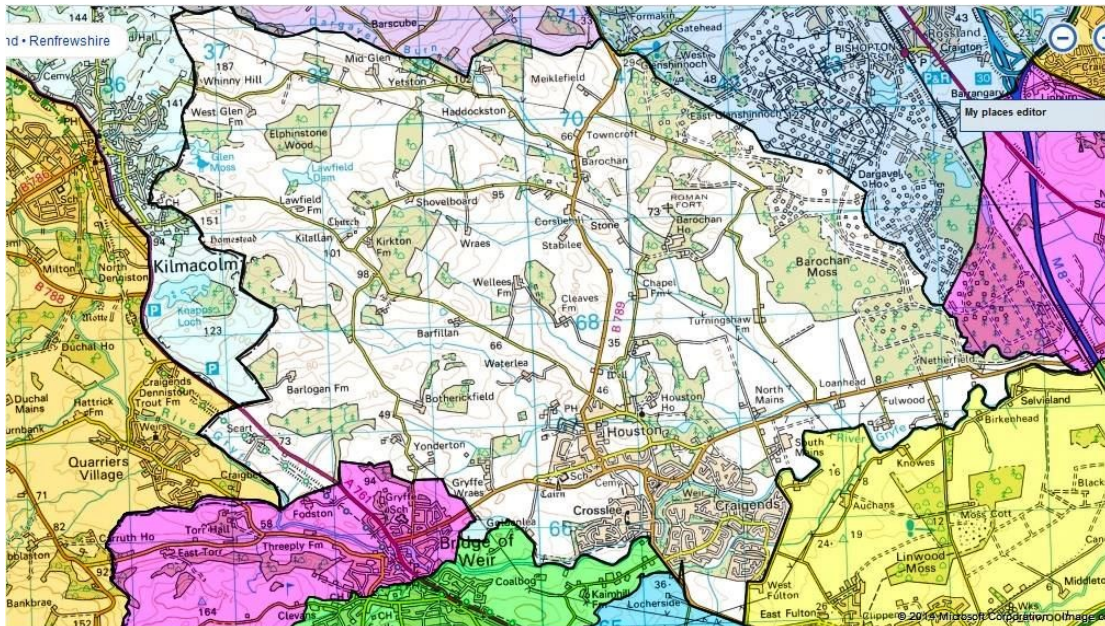
At the time that the present church was built, the parish was largely employed in agriculture, weaving and bleaching. The population in the 1871 census was 2191, but this included part of Bridge of Weir estimated to be about 600, giving about 1600 in Houston, Crosslee and the surrounding farms. Thereafter the population declined to end of the 19th century and then increased again to about 1,500 at the 1971 census. By the 1930s the church was badly in need of repairs and by this time responsibility fell on the congregation. Fortunately the Laird came to the rescue and agreed to carry out a scheme of restoration, improvements and re-decoration. This work was completed in 1938 and included the re-siting of the effigies to the west end of the sanctuary. Apart from the installation of two new stained glass windows and the re-siting of the organ, the church has remained virtually unchanged up to the present day. There is more information on our website and in the Very Reverend Andrew Herron's book "Houston and Killellan: A handful of yesterdays". And regarding the old Kilallan Kirk at www.kilallan.org

Recent legislation covering Health and Safety and provisions for disabled people have meant the existing church building fell far short of any of these requirements. A start was made in 2005 with the paving of the church entrance to provide disabled access to the church. A new extension to the east of the building comprising meeting rooms, vestry, kitchen and new toilet facilities was completed in 2015.

New Town proposals were made in the 1940s but not adopted. Craigends House was partly demolished in 1967 making way for the extensive private housing developments around the original village. By 1991 the population had grown to 5,500 and with building development continuing since then, the population has increased further to 6,610 recorded in the 2001 census and is currently estimated to be about 6,750.

Houston today

The following map gives an outline of the current parish boundary. The villages of Houston and Crosslee are at the southern edge of a substantial rural parish.



The parish has had to adapt to this large increase in population since the church was built and to meet the demands of the local community and the growth of church and youth organisations. The Church Hall, formerly the West Kirk and now named the West Halls, was extended in 1989 to provide additional halls and the Manse was upgraded in 2003 to meet the requirements of the General Trustees of the Church of Scotland. A Rose Garden has been created within the church yard, which provides a place for contemplation or just a chat.

Many of us commute to Glasgow for work. For more information about our parish please refer to the [Church of Scotland Statistics for Mission](#).

Houston lies approximately 6 miles northwest of Paisley, 7 miles from Glasgow Airport and 14 miles from Glasgow. Access to the M8 is within easy reach. Erskine Bridge across the Clyde is only 10/15 minutes away and Loch Lomond lies only 10 miles further on. The nearest railway station is at Johnstone with connections to Glasgow and the Ayrshire Coast.

There are a few shops in Houston including a pharmacy, a Co-op, a Post Office, a paper shop, dry cleaners, a hairdresser, a Beautician and two fast food outlets. Supermarkets are to be found in Johnstone and Linwood and there is also a large shopping mall at Braehead 9 miles away. Houston has four licensed pub/restaurants and a community café.

Cinemas are to be found in Linwood and Braehead; and there are also other leisure facilities at Braehead including a ski slope, ice rink and a large Arena.

The local library is in Johnstone, a part-time library in Bridge of Weir, and there are sports centres in Linwood (On-X) and Erskine. There are swimming pools in both places and Paisley has a range of leisure exercise facilities.

Houston is also home to an excellent tennis and squash club, and a bowling club. There are golf courses in Bridge of Weir, Kilmacolm, Bishopton, Renfrew and Paisley; and there are many other exercise clubs and other leisure/social societies active in the village. The village is very near the Sustrans cycle route 75 between Paisley and Inverkip, and there are many walking opportunities locally.

In Houston we have three nurseries – two independent, and one local authority attached to the non-denominational primary school. There are two Primary Schools - one non denominational and one Roman Catholic; and Gryffe High School which serves both Bridge of Weir and Houston and is highly regarded academically.

The local medical and dental practices have surgeries in both Houston and Bridge of Weir. The main hospitals in the area are The Royal Alexandra, Paisley (with A&E), and The Queen Elizabeth University Hospital, Govan (also with A&E and many regional specialist services). There are two hospices locally – Accord Hospice in Paisley and St Vincent's in Howwood.

That many Houston inhabitants commute to work in Paisley and Glasgow suggests a dormitory suburb, but there is an active social life in the village. Apart from the church halls in the centre of the village and the new ones at the church, events are held in the Carrick Centre, the Scout Hall (Compass Centre) and the Bowling Club.

As well as our own Church, there is a Roman Catholic Church and the Church of the Nazarene and a small Baptist congregation meet in local halls. We are part of [Greenock and Paisley Presbytery](#). Click [here](#) for the most recent five year visit report.

OUR PRESENT

Membership

We have 665 members and this has remained at about this level for the last 15 years with deaths being balanced by new members by profession of faith or transfer from other congregations. An average of about 250 people plus children attend morning service and around 330 take Communion once a year.

Our membership is very supportive and ensures that we can meet all our commitments with a small surplus most years. The congregation strongly supported the building of our church annexe raising over £500,000 over 6 years out of a total cost of £700,000; and the congregation and organisations give generously of their time and money in supporting charities.

Worship

We see ourselves as a welcoming and inclusive place where worship is central; and as active and progressive, aiming to make the most of the talents God has given us.

We encourage all members of the community to join us and hope they will stay on to enjoy the fellowship after the service. And we warmly welcome young families and children, with the Crèche and Sunday Club ensuring that parents also get the chance to worship while the children are engaged.

Music is a very important part of our worship. We use CH4 and hymns from many other sources. We are fortunate to be supported by a wonderful choir and talented organist/choirmaster who enhance our worship with an introit, anthem and postlude.

Our Sunday services aim to include members of the congregation where possible, and one way we do that is through our weekly Bible reading rota.

A carded Communion is celebrated twice a year, on the first Sundays in March and October, when there are three services on each day (11.00am, 2.00pm and 6.45pm) to ensure there is always a suitable time for members to attend. In addition to this, we hold an early Communion Service on the first Sunday of most months (9.45am), which provides the opportunity for people to attend a quieter and intimate service.

In order to be as inclusive as possible, we offer a car service to those who are housebound, as well as ramp access, space for wheelchairs and buggies within the standard seating, disabled toilets and a lift to the upper Killellan hall. We have a loop system in the Church, produce large print versions of the Order of Service and hymns for each Sunday. We have excellent audio and projection facilities, allowing us to project the words of hymns, intimations, powerpoint presentations, short films and photographs to the front of the church, and the use of CDs.

We have an annual series of additional services that we encourage all members of the community to become involved in.

As part of our worship strategy, we also have a worship team within the Kirk Session, whose remit is to support the minister and to provide worship support and cover when required.

Our locum minister finished one service recently by saying “It has been a pure pleasure sharing in worship with you. I very much appreciate the singing here; especially the spirituality of your singing, as it uplifts me, and I’m sure everyone’s spirits who is worshipping God here”.

For further information please see [Appendix A](#)

How we organise our affairs



Kirk Session September 2016

The Kirk Session has operated under the Unitary form of Constitution since April 2012. As a result, the control of the affairs of the Congregation, both spiritual and temporal, are vested in the Kirk Session.

There are 64 Elder members on Session together with 10 co-opted members who were formerly members of the Congregational Board. There are 39 men and 35 women with a mix of ages from mid thirties to 80+.

There are 50 Elder's Districts and Elders are also allocated to represent the Kirk Session at affiliated Church organisations and at other organisations who use our premises.

Six planned Kirk Session meetings are held each year. Others may be arranged if required.

Kirk Session teams, each with a team leader, are responsible for administering the affairs of the parish.

- ❖ Worship and Fellowship including pastoral care
- ❖ Safeguarding, Children and Youth Ministry.
- ❖ Mission and Evangelism including media, social and Fairtrade
- ❖ Finance
- ❖ Organisation and Management, including roll keeping, health and safety, training.
- ❖ Fabric and Grounds

Further information about the work of each of these can be found In [Appendix D](#)

A co-ordinator's meeting attended by the team leaders, along with the Minister, Session Clerk and Deputy Session Clerk is held 2 weeks before each Kirk Session meeting to discuss the agenda and church business. The Minister, Session Clerk and Deputy Clerk comprise an overarching management team.

Our financial position is positive, both in terms of supporting our own issues and in supporting others outside of our congregation, near home and afar.

Facilities

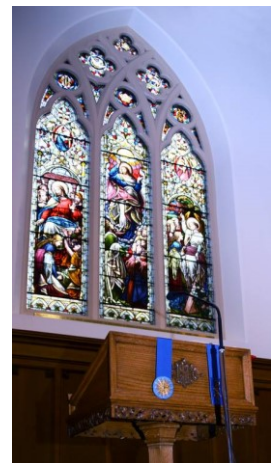


- ❖ **The church** is B listed, situated in Kirk Road, Houston PA6 7AR. It seats 340 worshippers with a single gallery, occupied by an organ, the choir, and multimedia console. It is enhanced by beautiful stained glass windows.

A view of the interior of the church can be seen by clicking on ‘A virtual tour’ on the Houston Kirk website (see [Appendix F](#)).

In September 2015, an extension to the east end of the church, over the existing graveyard, was opened giving additional accommodation including a vestry, kitchen, additional halls and toilets.

The church is cleaned weekly by volunteers and contractors clean the Killellan Halls.



Two young members of the cleaning team!

The East window

- ❖ **Our manse** on Main Street, Houston PA6 7EL was built in 1960 and substantially enlarged in 2003. It is situated behind the West Halls and is accessed through the grounds of the hall. It has gates separating it from the hall grounds. It has 4 public rooms and 5 bedrooms (one en-suite) as well as enclosed garden grounds and a single garage. It is double glazed with gas central heating. It has an energy efficiency rating of “D”.

Please note the house named “West Manse” is situated behind our manse and the house named “Wester Rackets” and is not part of the Church estate.



Front entrance



Back of manse

- ❖ **West Halls.**
These are in the village centre adjacent to the manse. They consist of two halls, an office, a committee room, kitchen and toilets on the ground floor, with two smaller rooms upstairs. These buildings were originally the West Kirk. The halls are cleaned by contractors.



❖ **Our grounds.**

At the West Halls there is a tarmacadamed area for parking. At the front there is a raised chipped area bordering the Main Street with several flowering cherry trees.

At the Church, there is an alpine garden to the front left with a graveyard to the right and round to the rear. At the rear to the left is a rose garden with seats. In early spring the graveyard is an apron of snowdrops and crocuses followed by a spectacular show of daffodils for Easter. There is a paved area to the front and access to the Killellan Halls to the right by a ramp. At the front of the Church, the parking area is used for the minister and disabled parking.



A team of volunteers undertakes the maintenance and enhancement of our grounds.

See [Appendix B](#) for more information

Our organisations – See [Appendix D](#) for more information on each of these.

- ❖ Sunday Club, crèche and cradle roll
- ❖ Boys' Brigade and Girls' Brigade
- ❖ Choir
- ❖ The pastoral care group
- ❖ The Guild
- ❖ The Cameo Club, (for older people)
- ❖ The Wee Blether
- ❖ The Scottish Country Dancing group
- ❖ The walking group (including the wee walk)
- ❖ Chix with Stix
- ❖ Kirk creations

In addition our halls are used by a number of community groups including:

- ❖ 2 Girl Guide companies
- ❖ 3 Brownie packs
- ❖ Mother & Toddlers
- ❖ ROAR (Reaching Older Adults in Renfrewshire)
- ❖ Pilates class
- ❖ Local Health and Social Care Partnership

Our relationship with our community and those further afield

Our Church is eager to reach out to our local community and to others further afield. We have to be God's hands and voice; working together to ensure that our Church is involved in, and proactively supporting the local community; and supporting a community overseas.

Locally, we have excellent publicity through the Kirk website and our magazine, "The Record", which is distributed to all households in the parish (unless they have requested otherwise).

Our annual Kirk Carnival is a major community social event and attracts well over a thousand people from Houston and further afield. Many bring family members with them and children are an important part of the festivities. The Kirk Carnival programme allows local businesses to advertise and helps us promote the church and its organisations by being offered to each household.

The Minister is the Primary School Chaplain and member of the chaplaincy team at Gryffe High School.

Further information can be found in Appendix E

OUR FUTURE

The Kirk Session of Houston and Killellan Kirk will work alongside our new minister as we meet new opportunities and face challenges together. We will support our new minister in his or her work in Houston and help where we can to further God's work here and elsewhere.

We see our opportunities for the future falling broadly into 4 Groups

Education and Training

- ❖ Developing further training for our elders.
- ❖ Re-instating the prayer group and bible study workshop.

Families and Young People

- ❖ Engaging and connecting better with young people.
- ❖ Maintaining our support for our current youth services and exploring ways to improve our reach to teenagers/young adults; this will include consideration of any additional support required including the employment of a youth worker. Maintaining and strengthening the good relationship with, and our input into, Houston Primary School and Gryffe High School.
- ❖ Encouraging families to continue to be involved following baptism beyond our present connection with them through the cradle roll.

Community at home and abroad

- ❖ Increasing the level of our Mission work within the Parish especially in the areas where new house building is taking place.
- ❖ Setting up a "buddy" system for new Church members.
- ❖ Increasing the use of the recorded services to those who are housebound.
- ❖ Increasing our pastoral care commitments with more referrals from elders and others.
- ❖ Encouraging further use of our new halls by the wider community.
- ❖ Supporting links with the other Christian communities in Houston.
- ❖ Achieving a financial position so that we can discuss dedicating our Carnival income to a big project in support of our Missionary Partners

Facilities

- ❖ Discussing progressing plans for an eco-friendly woodland car park for 40 cars (planning permission has been obtained) and access to the internet at the Church and Killellan Halls.
- ❖ Maintaining the Church facilities so that they are fit for purpose for the future and provide accommodation for worship and all the other activities associated with our congregation. Keeping up with changes in communication and education so that these remain relevant and attractive to existing and new members.

**THIS PAGE IS
INTENTIONALLY BLANK**

APPENDIX A

Worship

We like to think of ourselves as a progressive Church who, outside of our faith, don't take ourselves too seriously. Our Church is welcoming and inclusive, and is where we can be seen to be enjoying ourselves on a Sunday morning at 11.00am and many other times during the week.

Worship is central to our existence. We believe that while worship is a duty, it should be enjoyable within the framework of a caring Church and we see ourselves as a progressive, joyful and inclusive congregation. We worship God in many ways – by listening, singing, reading, talking, laughing and crying – together, and we make the most of the talents God has given us to make the experience rewarding. We encourage all members of the community to join us, and hope that they will stay after the service for a cup of tea and a chat. We also actively welcome young families and children, with the crèche and Sunday Club ensuring that parents also get a chance to worship while the children are engaged in the new halls following the children's address.

We have a **flower ministry**. The flowers are donated on most Sundays by members of the congregation. Each Sunday the flowers are delivered by members of the congregation to those who would benefit from a gift from the service, indicating that they are remembered by the congregation in times of sorrow, illness or happiness. These are supplemented as required from a flower fund if the minister requires additional flowers. The Kirk Creations group provide additional adornments for special services such as Harvest Thanksgiving, Armistice Sunday, Christmas and Easter.

Music is very important to our worship and we have a wonderful mix of hymns, ranging from traditional psalms to much more modern offerings. So there is something for everyone. We are also very fortunate to be supported by a wonderful choir who enhance our services with an introit and anthem and who often perform at other worship and social occasions.

Congregational singing is led by a committed, 22 strong mixed voice choir and accompanied on the organ. Choir members sit in the gallery at the rear of the church, just in front of the 2 manual and pedalboard organ, built by Church & Company in 1981.

From September to May inclusive the choir sings an introit and anthem at morning service, at evening Communion services, and makes a major contribution to an annual Lessons and Carols service and to Maundy Thursday and Good Friday services. At these special services the choir usually sits in the chancel area. The choir also occasionally sings at other church events.

The choir meets for rehearsal on Thursday evenings and has a repertoire ranging from early to contemporary music.

We are blessed by having a talented and dedicated organist as well as at least one member who can deputise on Sunday if required.



We celebrate **Communion** twice a year, in March and October, when there are three services on each day (11.00am, 2.00pm and 6.45pm) to ensure there is always a suitable time for members to attend. In addition to this, we hold an early Communion Service on the first Sunday of each month, which provides the opportunity for people to attend a quieter and intimate service.

In order to be **as inclusive as possible**, we offer a car service to those who are housebound, as well as ramp access, space for wheelchairs and buggies within the standard seating, disabled toilets and a lift to the upper Killellan hall. We have a loop system in the Church, produce large print versions of the Order of Service and we also have excellent audio and projection facilities, which allow us to use screens at the front of the Church for words of hymns, power point presentations, short films and other illustrations and photos, as well as CDs and DVDs.

Recordings of the latest service are available on our website and for others as requested on MP3 players.

We offer a “**bookshop**” on the 6 Sundays before Christmas and Easter, with a range of books and cards available as well as an ordering service.

We have an **annual series of additional services** that we encourage all members of the community to become involved in.

- ***World Day of Prayer*** - we alternate hosting the service with the congregation of St Fillan's Church. The Guild organise the services in our Church.



- ***Easter and Holy Week*** – following Palm Sunday when the children parade through the village with “palm branches” and a donkey, we have services every evening during Holy Week, some of which we share with Linwood Parish Church. On Easter Sunday, we have a very early morning Communion service in the grounds of the Church followed by a shared breakfast served in the halls. We then have a family Easter Service at 11am in the Church, during which the children decorate a Cross with daffodils and enjoy an Easter Egg hunt.



In the old graveyard



Inside the restored old Kirk

- In the summer, we hold a ***service at the remains of the original Kilallan Kirk*** on the outskirts of the village – this is a wonderful, quiet and poignant service where we gather to remember the origins of our congregation and community and celebrate Communion
- ***Dedication Services*** – at the start of the new sessions, we hold dedication services for our Sunday Club, Guild, Boys and Girls Brigade.
- ***Cradle Roll Service*** – where we ask the parents of children who have been baptized either in our Church or elsewhere, to renew their Christening vows.



Harvest decorations and gifts



Posies



Harvest decorations

- ***Harvest Thanksgiving Service*** – At the end of September we give thanks for all God's good gifts to us. Our Church is beautifully decorated with fruit, flowers, bread, fish, and vegetables. We bring gifts of food which are donated to the Renfrewshire foodbank, and we make small posies of flowers which we take to ill, lonely, bereaved or housebound members of our congregation.



- ***Armistice Service*** – The BB Pipe band parade through the village followed by representatives of the various organizations in the village. The service starts early to allow for the two minute silence at 11am, and is followed by a further act of remembrance and short service at the War Memorial, where the organizations and others lay their wreaths.
- ***Remembering Service*** – During the advent period, we hold a service to remember those who are no longer with us. This is open to anyone in the community who finds this time of year particularly hard without their loved one.



- ***Gift Service*** – during one of our Advent services, we hold a gift service where members of the congregation donate presents to a charity chosen by the Kirk Session – this year's charity was the Crossreach project for the children of prisoners.
- ***Nine Lessons and Carols*** – on one evening during advent, we hold a service of 9 lessons and carols, which is led by the choir and the readings are read by members of the congregation.
- ***Watchnight Service*** – on Christmas Eve, we hold a watchnight service from 11.30pm preceded by half an hour of community singing, to welcome Christmas Day.
- ***Christmas Day*** – a family service is held on Christmas Day, where we celebrate the birth of Jesus. This is a very family friendly service, where the children are encouraged to bring along a toy or gift they have received.

APPENDIX B

How we organise our affairs

Safeguarding, Children and Youth Ministry. Safeguarding

We take the issue of safeguarding seriously and the care of our children and vulnerable adults is a high priority.

Our Safeguarding Panel is made up of a coordinator and three other members.

The group has attended panel training.

We have held two Elder training sessions since it became mandatory for all Kirk Sessions.

PVG checked volunteers are invited to attend Safeguarding training at Houston & Killellan Kirk or at another venue within Presbytery. All those working with children or vulnerable adults are PVG checked in accordance with Church of Scotland regulation.

Our Sunday Club is led by one of our elders. Other aspects of our Youth ministry are described in “Starzone” (see page 32), our minister’s interaction with local schools (see page 43), and the work of the Boys’ and Girls’ Brigades (see pages 33-36)

And of course we support other youth organisations in the village with accommodation as requested. Two Brownie Packs and one Guide Company use the Killellan Halls; and one Brownie Pack and one Guide Company use the West Halls.

Worship and Fellowship including pastoral care

Objectives of the Worship Team –

- To support the minister, as necessary, and be responsible for arranging scripture readers for Worship services
- To ensure that our form of worship meets the needs of our congregation and the parish
- To enable wider participation of members of all ages in leading worship
- To consider the use of technology to enhance worship
- To develop a variety of services or alternative forms of worship, developing ways to promote worship at times other than a Sunday morning
- To develop groups for those interested in furthering their faith
- To continue with a diversity of hymns and songs
- To promote fellowship in the form of social and other activities
- To implement ways of bringing both new people and inactive church members into active church life (with other teams and in partnership with other churches where appropriate)
- To be responsible for ensuring that all organisations for which the Church has a responsibility and also those who meet on Church premises have nominated Elders and to ensure that sufficient support is available and given to all our young people, especially the Sunday Club, and to continue the work of the BB and GB liaison team
- To develop the Young Church for the future.

The Pastoral Care Team supports the minister in meeting the pastoral needs of all members of the congregation. It liaises with the Minister and keeps him fully informed of the pastoral needs of members as information flows to them; and liaises with the relevant district elder, as necessary.

Mission and Evangelism including media, social and Fairtrade

We have to be God's hands and voice. So we try to work together to ensure that our Church is involved in, and proactively supporting the local community; and supporting a community overseas.

Mission includes our efforts to spread God's word through worship and telling our neighbours about our faith. But we need to show our faith through practical work as well.

The Media sub group has responsibility for the Kirk Record, our website and facebook page, for publicity and for encompassing modern technology in our worship. There is further information about all of this throughout this document (see Appendix A – Worship, and Appendix E - Our relationship with our community and those further afield).

The Social Committee is very active in providing social events and fundraisers. We try to have a variety of different events and are conscious of the need to avoid clashing with other events in the Community.

We host an Easter breakfast and Harvest lunch annually: also providing Christmas fare after the Lessons and Carols service.

For the past few years we have had an annual booking with The Bearsden Fiddlers and have already secured a date for November 2017. We donate to their annual charity. This is always a "sell out" in the West Halls.

Some of our events are social but we have also run fundraisers for the Kirk Building Fund. Family events have included Beetle Drives, quizzes, a scavenger hunt and recently we organised the Retirement Ceilidh for our Minister.

We have been involved with several concerts usually held in the Kirk, including an organ recital, by providing refreshments.

We are a Fairtrade congregation and work with our local partners to promote Fairtrade goods during Fairtrade week and at other times – and we have 2 or 3 Fairtrade stalls a year in the Church after morning service.

Organisation and Management, including roll keeping, health and safety, training.

The team ensures the smooth running and further development of the Kirk Session and its associated teams and the Congregation, giving consideration to issues of the National Church at General Assembly and Presbytery as they affect us.

It carries out Roll keeping duties and reviews Elders' Districts, as necessary.

It monitors our effectiveness.

It deals with all matters pertaining to Church employee contracts e.g. Organist, Church Officer, Secretary etc.

It deals with Kirk Session minutes.

Finance

In the year to 31 December 2015 Houston & Killellan Kirk generated total General Fund income of £153,000, the 3rd highest of the 48 churches making up Greenock & Paisley Presbytery. Results for 2016, although still unaudited, will be broadly similar.

At the close of 2015 the church had total funds available of £128,000 (which included cash and bank deposits of £50,000 and a loan of £70,000 due to be repaid from our New Building Fund before the end of 2017).

During 2015 a sum of £141,000 was also raised towards the cost of building much needed new hall accommodation (Killellan Halls) annexed to the church. 2015 was the 3rd year of a 5 year fundraising programme to which the congregation had committed, in order to raise £700,000 to finance the cost of the new building and professional fees. By the end of 2015 the sum of £595,000 had been raised and with the aid of a loan of £40,000 from Church of Scotland General Trustees, and £70,000 from our own reserves the building work was completed.

By the end of 2016 a further £60,000 had been raised, the loan repaid to the General Trustees (well ahead of schedule), leaving a balance of £45,000 to be raised in 2017, the final year of fundraising activity for this project. With £24,000 pledged by members for 2017 we have a final fundraising target of £21,000 to be achieved by December 2017, which we confidently believe we will achieve.

In addition to raising income for our own requirements, we have special collections during the year in response to disasters, and to support local and national charities, as well as support for our missionary partners in Mwandi, Zambia. In 2014 we raised £8,400, in 2015 £5,900, and £6600 in 2016 for these causes.

Draft financial results for 2016 indicate that we will have a small surplus to transfer to reserves, and that we have met in full our allocation for congregational commitments for both Ministry and Mission contribution and local presbytery dues.

Our budget for 2017, recently approved by Session, despite taking a judicious view of income for the year in view of our current ministerial vacancy, is forecasting a small surplus.

We look forward to a secure financial future with a new minister leading us and building on the commitment and vision our congregation has shown over the last 10 years.

FURTHER INFORMATION

Our audited accounts are submitted annually to OSCR and information can be viewed online using the search facility at www.oscr.org.uk/charities, quoting charity number SC012822. Periodic financial information, after being discussed at Session meetings, is available to view on our website at www.houstonkillellankirk.org

Fabric and Grounds

The purpose of the Fabric & Grounds teams is the maintenance and development of Houston Kirk's buildings and grounds in order to enable the work of the Church and the safe enjoyment of the buildings for all who use the property. There is an overall fabric convenor and a convenor for the West Halls, as well as a grounds convenor.

The remit for the Fabric and Grounds Team includes:

- creating a positive environment for current and possible future church uses;
- developing a clear programme of maintenance and renewal of the church fabric with timeline of actions and budget estimates;
- ensuring that all work over a budget of £1,000 is supported by three quotations;
- budgeting the work programme to stay within the discretionary annual budget of £5,000, and to seek approval from the Kirk Session for any overspends;
- No requirement to seek Kirk Session approval for works not exceeding in cost £300.
- frequent liaison with the Finance Team over budgeting and timing for work;
- liaising with presbytery for building surveys and to ensure a valuation is carried out every five years;
- seeking presbytery approval for all work over £5,000;
- ensuring insurance cover is adequate for all buildings;
- liaising with groups who let the buildings to ensure that reasonable requirements are satisfied;
- ensuring that all buildings and surrounding area complies with legislation as required, e.g. Health and Safety, Disability;
- overseeing special building and fabric projects as requested by the Kirk Session;
- active liaison with other Teams to determine needs and requirements
- The maintenance and enhancement of the grounds of Houston Kirk and Church Halls.
- Members of the congregation can be appointed to the team and also people from outwith the congregation whose talents would assist the team can be "corresponding members"

The team meets as required by the convenor.

**THIS PAGE IS
INTENTIONALLY BLANK**

APPENDIX C

Our Facilities

Our Church buildings

The pulpit can be moved to different locations as required (on castors).

We have removed the pews in the chancel area to allow full use of the space for concerts, plays and the bookshop etc.

The vestry has a lockable cupboard and a toilet.

There is a kitchen off the downstairs hall and a servery off the upstairs hall.

There is a lift and disabled toilets downstairs.

There is a lovely full height atrium allowing illumination of the stained glass window above the chancel.

There is separate ramped access to the halls; they are alarmed.

The Church has two doors one of which is approached by a ramp.

The Church itself has had the ends of a few pews removed so that wheelchairs and pushchairs can be accommodated within the body of the congregation. We have a wheelchair and also a defibrillator.

There are audio and video facilities which are operated by members on a rota.

The choir are usually seated in the gallery with the organ. Additionally we have the use of a piano and a keyboard within the Church.

We have 13 stained glass windows. Views and information about these are on the Kirk website.

They are one of the main features of the building.



Our manse.

Below is a plan of the manse with approximate dimensions. Redecoration will be carried out in line with the new minister's wishes, and refurbishment as required.

The Energy Performance Certificate Reference number is 8816 9127-7200-0883-2996 and is dated March 2016. The Energy Efficiency Rating is "D". The certificate can be found at www.scottishepcregister.org.uk using the postcode search and entering PA6 7EL (Note – "Manse of Houston" and NOT "West Manse").

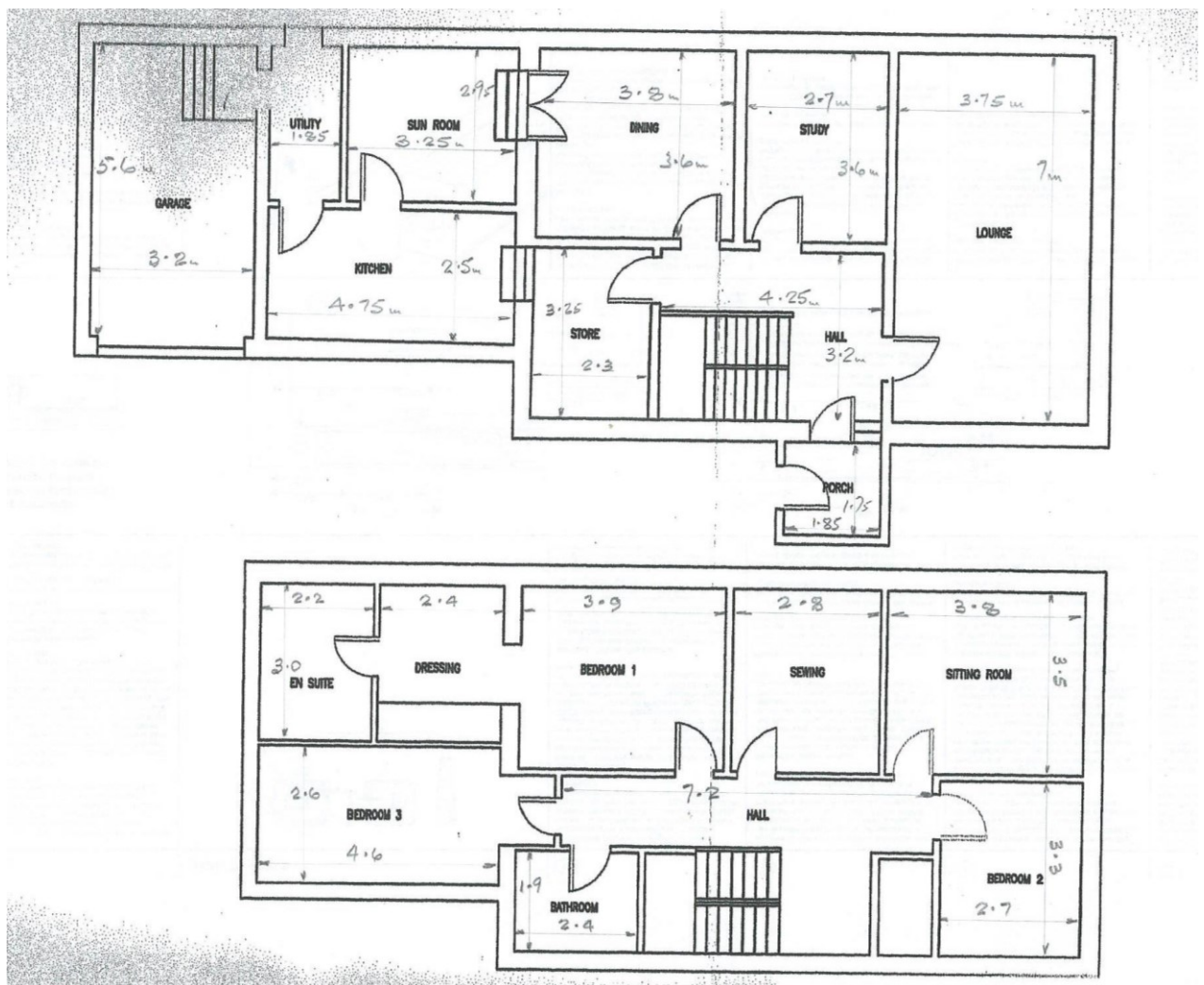
The manse is enclosed by garden grounds. These are child and dog secure – walled on two sides with a gate to the front entrance and fencing to the side.

The kitchen is approached through a "store" with large storage cupboards. It is well suited for use as an informal dining area. The kitchen itself has a large American style fridge, a 6 ring gas cooker with hood and two ovens, access to a utility area with sink and access to the garage, and glazed double doors to the sun room/playroom. There is a dish washer and automatic washing machine.

The lounge is spacious with a gas fire and windows on two sides. The dining room leads off the hall and then down three steps to the sunroom/playroom. The sunroom/playroom leads out onto a paved, enclosed patio area, and on into the garden. There is a study, with shelf units, accessed from the hall.

The landing has large storage cupboards and the five rooms upstairs could have a variety of uses as well as serving well for bedrooms. There is a large family bathroom with over-the-bath shower, and a master suite with a dressing area with large built in wardrobes and a well fitted en-suite with shower cubicle. There is a further large double with fitted wardrobes, and three further rooms.

There is a large floored loft accessed by a pull-down ladder, double glazing and gas fired central heating throughout. Many of the windows have vertical blinds or roller blinds and there is neutral carpeting in most rooms with some having laminated flooring ("store" and sunroom/playroom) - kitchen and bathrooms have vinyl floor covering.





Front of manse



Rear of manse

We employ a Church officer/hall keeper. The duties are currently as follows:

1. Responsible for monitoring the cleaners in the church, West Halls and Killellan halls to ensure that they attend for the contracted hours and properly clean the premises.
2. Ensure toilets are fully serviced with towels etc. and clean if necessary between cleaners visits
3. Liaise with Church diary and Property Convenors to ensure that Church and Halls are heated when required.
4. Supervise halls periodically to ensure that organisations are carrying out their obligations to leave premises neat and tidy.
5. Assist with the annual spring clean of church and halls, as agreed with Fabric Convenor.
6. Report any repairs etc. required to Fabric Convenor.
7. Open up the Church or Halls for routine servicing, organ and piano tuning as agreed with Fabric Convenor
8. Arrange for the order of all necessary supplies of toilet and cleaning materials. Accounts for such supplies to be checked and forwarded to the Treasurer for payment.
9. Arrange for holiday relief, if appropriate.
10. Open and close church for weddings and funerals ensuring that heating etc. is available as required and ensure that church is returned to a tidy state after the event.

APPENDIX D

Our Organisations

Sunday Club

Beginners making rain noises with shakers and sheltering under the table while learning about Noah and the flood



Sunday Club outing – and ice cream afterwards!



We have an enthusiastic group of around 30 children, aged between 3 years up to 12 years, lead by an equally enthusiastic and dedicated group of leaders.

Sunday Club meets on Sundays, during school term time, before morning service; then sit together in Church leaving after the children's address. After some time together the children split up into different groups – beginner, junior and bible class. The groups often follow Scripture Union material, Bubbles, Splash and The Grid. They also use the websites Sermons4Kids and Spill the Beans.

For the last 8 years the children have been collecting 'Brown Pennies' which help supplement our missionary partners Milk Feeding Program in Mwandi, Zambia. During our recent extension to the Church the Sunday Club have helped raise money by holding a family beetle drive, sponsored walk and cake sale.

The Sunday Club produce a Nativity Play each Christmas which is presented on the Sunday before Christmas Day during morning worship. The congregation enjoy the children performing and the children enjoy acting and singing while hearing again the story of the Nativity – often from a rather different point of view than the traditional. This year the midwife couldn't find the stable and discovered that Jesus doesn't need us but that we need Him!



The Sunday Club regularly participate in family worship

- Readings
- Singing
- Handing out Palm Crosses on Palm Sunday
- Helping to serve the Elements at family Communion
- Help with uplifting offering
- Giving flowers and the Baptismal Certificate to parents at baptisms

Crèche

A crèche is available for babies and children up to 3 years of age. It is available after the Children's address.

Cradle Roll

Our Cradle Roll was instituted in 1962 and has 1249 entries. Each baby that is baptised or blessed is enrolled and presented with a certificate. Their names are also entered onto scrolls displayed in the Church. We send a birthday card on each of the child's first three birthdays and also an invitation to the parents to bring the child along to crèche or Sunday Club as appropriate.

All parents with children on the cradle roll are invited, with their children, to a cradle roll service each year. This has recently been incorporated into the annual Sunday Club dedication service.

Starzone



Starzone is a children's community outreach activity club that has been running for 10 years. It is available to children from P1 – P7. On average 20 -25 children attend.

We hold 2 days at Easter and 5 days over the summer break. It is lead by two young leaders who organize the programme, with the help of volunteers from the church.

The children enjoy themed sessions with handcrafts and games. Recent themes have been "Olympic Fun", "Royal Celebration", "The Circus" and "A Bugs Life".

Boys' Brigade

The 1st Houston Company of the Boys Brigade was formed in September 1978. Since this time successive Captains, Officers, leaders and helpers have given freely of their time and talents to create and develop the company which is still one of the largest in the Paisley and District Battalion.

❖ Our faith

The 1st Houston Company is an important part of the Houston & Killellan Kirk family. From time to time the Company takes an active part in church services and events run by the church. For its part the church fulfils its responsibilities towards the Boys Brigade, including: appointment of officers and helpers, the provision of spiritual guidance and support for the Captain, staff and the boys, support and liaison by the Kirk Session (in particular by the dedicated church elders to each section of the Company) and provision of facilities and financial support where necessary to the Company. The Company looks forward each year to the rededication parade and service where the achievements of the boys are recognised in the presence of the church congregation.



Dedication service – team work required!



Receiving a Queen's Award

Over the years the Ministers, office bearers and congregation of Houston and Killellan Kirk have positively supported the 1st Houston Boys' Brigade and been quite rightly proud of the considerable achievements of the boys; in particular the generations of boys who have achieved the highest BB award, the Queens Award, and the Duke of Edinburgh awards at all levels.

Central to the past and continuing success of the 1st Houston Boys' Brigade is the support and strong leadership provided by previous ministers. The commitment of the church minister as Company Chaplain is key to the development of a positive relationship between the church and the Boys' Brigade.

❖ Company Structure

Anchor Boys (19 members) - for boys P1 - P3, meets weekly on a Friday night.

Junior Section (36 members) – for boys P4 - P6, meets weekly on a Thursday night.

Company/Senior Section (38 members) – for boys P7 – S6, meets weekly on a Friday night.

❖ The Pipe Band



The Pipe Band

The Boys' and Girls' Brigade Pipe band- formed as a pipe band in 1990 and is open to all members of the 1st Houston Boys' and Girls' Brigades. Meets on a Tuesday and Thursday night and plays at various Company/ Battalion parades and community events, one of the highlights each year being leading the Kirk Carnival parade. They welcomed in the QE2 on her final visit to the Clyde.

❖ Activities

All sections of the company actively plan their programmes to ensure there is a good blend of activities to meet the needs of individual boys and groups; boys are encouraged to participate as part of a team to develop positive communication and social skills. The activities are age related to ensure that every boy has the opportunity to achieve and more importantly enjoy the time they spend in each section.

All sections of the Company participate in Battalion events and championships and have over the years been very successful in various Battalion competitions.

The Company/senior section of the company whilst working to, and encouraging boys to achieve the relevant awards in the recognised BB awards schemes structure, is one of very few companies in the Battalion who offer boys the opportunity to participate in all 3 levels (bronze/silver/gold) of the Duke of Edinburgh Award scheme

Since 2011, all sections work to the RPFA ethos.

R- Respect P- Participation F – Fun A- Achievement. By working to this ethos all boys are aware that: they show respect to themselves, others and the environment: they participate fully in section activities to the best of their ability: they have fun whilst attending their section: there will be associated achievement by all boys whether that be formal awards within the BB award structure or personal achievement in developing new skills and enhancing/improving skills they already possess.



Anchor Boys Tug-of war!



Junior section marching



Company section at camp

❖ Achievements

This year 5 boys have gained the Bronze DoE and are working towards silver, 8 boys have gained the Silver award and are working towards Gold. 8 boys should complete the Queens award before the display in May and 5 should gain the Presidents badge.



Duke of Edinburgh Gold award winners with Prince Edward



Both the Company section and Junior section over the last 5 years have either been 1st or 2nd in the respective battalion Championship. Both sections have won the respective championship twice in last 5 years.



Collecting the
Junior Battalion Championship Award



Queen's Award winners

This year to date the Company section is in 1st place and the Junior section in 2nd place with a number of competitions still to do.

When one considers the number of boys who have been members of the Company since 1978, it can be reasonably said that the social benefits to Houston over the years have been considerable. The boys have been a credit to their parents, their officers and the community as a whole, and the company in Battalion terms has been, and continues to be very successful.

❖ Leadership

The company is fortunate in that it has a dedicated and hard working team of officers, leaders and helpers in all sections of the Company providing a high standard of leadership and support to the boys in each section of the Company.

We are also fortunate to have a small but very hardworking Parents and Friends Association committee, who run annual fundraising events to financially support all sections of the company.

The 1st Houston Company of the Boys' Brigade, with the support and encouragement of the congregation, officer bearers and the Company Chaplains of Houston and Killellan Kirk has, and will continue to provide a platform for generations of young people to develop into responsible citizens in the local community.

Girls' Brigade

1st Houston Girls Brigade was formed in 1985. It consists of 3 sections. There are currently 6 Explorers (P1-P3), 11 Juniors (P4-P7) and 4 Brigaders (S1-S6). We meet on Monday nights. Each section follows their own programme. These consist of a varied schedule of craftwork, cooking and baking, games, sport, projects and worship. From P4 onwards the girls also have the opportunity to join the BB Pipe Band. And from S3 the Brigaders take part in the Duke of Edinburgh Award scheme.

During the session we have various social events – a Hallowe'en party, a Sausage Sizzle night out in the car park of the Church Halls and a Christmas Party which Santa attends. We have a Parents' Night at the end of each session at which the Achievement badges are awarded to all the girls who have attained them through the work they do throughout the session.



“Heart Start” training



All conked out after an amazing day at the Girl's Brigade National Scavenger Hunt competition
And this won best overall picture!

Pastoral care

The Pastoral Care Team supports the minister in meeting the pastoral needs of all members of the congregation. It liaises with the Minister and keeps him fully informed of the pastoral needs of members as information flows to them; and liaises with the relevant district elder, as necessary.

The team consists of five ladies and one gentleman who meet formally at least quarterly, but keep in touch regularly about anyone in the parish requiring a visit, whether members or non members.

We rely on elders and of course word of mouth to supply us with names of those who might benefit from a call. We liaise well with the minister over hospital or home visits as required, while having our own list of regulars with whom we keep in touch.

There are around 40 people currently receiving input from the team. They are helped in many ways such as providing transport to visit relatives and those in hospital, or to a hospital appointment, providing recordings of church services and general support with social visits and the like. All of this is done in strict confidence.

The Guild

We have a large and very successful Guild which started in 1892. There are 71 members at present, all ladies but we have had a few gents as guests. Some visit quite often and they do help out so we are hopeful some gents may join.

Our Guild boasts over 1,000 years of Guild Service and many members have received their award badges this year. Here they are -

2 over 50 years, 2 over 40 years, 10 over 30 years, 21 over 20 years, 18 over 10 years, 20 under 10 years and we have had 9 new members join us this year. Fabulous record!

Our Guild meets fortnightly from September to March. We run two smaller fundraising events in each year which are usually an autumn and spring coffee morning raising around £1000 each; and a Victorian Christmas Market which is our main fundraising event (£2600).

The money we raise each year is distributed to charities. Firstly the Church, then to two of the national Guild Projects, various local charities and the charities of that year's guest speakers. In March '16 we distributed:

Houston & Killellan Kirk	£1,900	Accord Hospice	£ 100
Kirk Extension Fund	£2,000	Mission Aviation Fellowship	£ 50
National Guild Project, Christian Aid	£ 150	Tearfund	£ 50
National Guild Project, Prospects	£ 150	Al-Shurooq School for Blind Children	£ 200
St. Vincent's Hospice	£ 100	Total	£ 4750

We run an annual outing in May and its subsidy is the only money spent on Guild members. A well deserved treat!

We have a guest night, inviting other local Guilds to an evening of (usually musical) entertainment. This is always a great success as we meet other Guild members.

The Guild also hosts the World Day of Prayer alternating with St Fillan's Church each year. In 2017 it will be held in St. Fillan's Church.

We support our Cameo Club, for seniors, by helping to organise and arrange events for them. And we provide baking for them to enjoy during their meetings.

Our Dedication Service is in September. Members do the readings and prayers and choose the hymns in conjunction with the minister.

We attend our Presbyterian Guild at their meetings and have a Project Partner to keep us informed about the Projects; and our Convener and some members attend the uplifting Annual Guild Gathering, bringing back plenty of ideas for us to use.

We are a very friendly and lively Guild. We love to chat and laugh and our guests and speakers have given us praise for our warm welcome and very enjoyable evenings and our guests always love to come back.



Our Guild at their Victorian Christmas Market (an annual event)

The CAMEO (Come And Meet Every One) Club

The club aims to promote friendship, and enjoy the company of friends old and new by meeting together for various activities

The Cameo Club, which was formerly known as The Senior Citizen Club, meets every 2nd Wednesday at 2pm from September to April in the West Halls.

There are 14 members at present, both Kirk members and non-members.

The programme during the year includes visits from musical groups, and presentations from guests on a variety of topics. The group also enjoy Halloween and Christmas parties, and Christmas lunch at a local restaurant and the Bring and Buy sales.

A car service is offered to take the less able to the Club and back home again.

The Wee Blether



The “Wee Blether” was started in September 2007. We meet on Tuesdays in the West Hall at 10.30am for an hour where we have tea/coffee and a biscuit and of course a “wee blether.” There’s a small charge of £1 and more than £14,000 has been given to the Church funds over the years. There’s a rota for volunteers to take a turn of making the tea/ coffee and washing the dishes and with an average of 30/35 people we are not short of helpers.

We’ve had various donations of items to sell, including freshly caught trout, home grown vegetables, preserves, knitted goods and handcrafts. There’s also a small book stall where books can be purchased for a small donation.

We don’t meet over the summer months. However, on a few occasions, some of the ladies have invited us to have morning tea in their garden. This is always enjoyable, especially when the sun shines!

Houston and Killellan Kirk Scottish Country Dancing Group



The Group meet every Wednesday evening at 8pm in the West Halls from September until the end of May.

At the present time there are 28 members consisting of members and non members of Houston and Killellan Kirk who come from as far afield as Paisley, Howwood and Renfrew.

They are a very social group and halfway through the evening stop for tea and a chat.

All are welcome, whether experienced or new to Scottish Country Dancing.

The group has entertained at Brookfield Bowling Club, Erskine Home, Campbell Snowdon Care Home and the Rural Institute as well as for Kirk organisations and functions.

The group give two donations a year for the use of the facilities and the upkeep of the hall from subscriptions from the dancers.

Chix with Stix



The group meets on Mondays from 10.30 -12.30 in the Killellan Halls throughout the year.

There are on average 12 members attending each week and they take part in knitting and crocheting projects mainly for family interest. There have been group projects involving the sale of knitted goods at open coffee mornings to raise funds for the Church. The group has been very successful in this and has raised almost £2000.

They make financial donations towards the hire of the hall and the use of facilities.

It is a happy caring group comprising mainly of Church members although the non members involve themselves wholeheartedly in any projects undertaken. It is always available for new members and recently there have been fresh faces who will hopefully enjoy the happy company and remain.

Walking group



The Walking Group has a walk on a Saturday roughly every two weeks from September to the end of May. The walks are around 5 – 8 miles in length and are on tracks, paths and quiet roads; we range over Central Scotland and the Clyde Estuary. The Walking Group started up in 2004 and is a very sociable group of friends.

Numbers on the walks vary from 8 walkers up to 20 walkers. Everyone is welcome and we have a number of regular walkers who are not members of the Kirk.

The Wee Walk has been running for a year and a half and was developed to meet the needs of walkers who can no longer manage the length or the terrain that the Walking Group can cover. Wee Walks are usually held closer to Houston and are rarely held more than 10 miles from Houston. The Wee Walks are held on a Monday morning and are 3 to 4 miles in length on easy ground, usually passing or ending at a coffee shop. Numbers are similar to the Walking Group but the Wee Walk often has youngsters accompanying their grand-parents and is a splendid social occasion. Like the Walking Group not all walkers are members of the Kirk.

Kirk Creations

Kirk Creations is a group of volunteers, mostly ladies, who meet up several times a year to produce craft items for sale for Kirk funds. Projects that have been tackled to date include crochet and knitted items, decorated filled boxes, Christmas Wreaths and table decorations. Flower arrangements are also made at Easter to be handed out to members of the congregation. We are a happy group who enjoy each other's company and at the same time raise funds for the Kirk.



**THIS PAGE IS
INTENTIONALLY BLANK**

APPENDIX E

*Our relationship with our community
and those further afield*

Our Church is eager to reach out to our local community and to others further afield.

- ❖ Our website and facebook page help us to reach well beyond our membership. The facebook page is really used as a community resource and a huge number of people who have little to do with the Kirk follow it - and it's shared by many other pages. Our Kirk "Record" is distributed to all homes in the village (unless they have declined) so we can let folk know of what we are doing, how they can join in and, especially, about our worship. Volunteers deliver over 2,000 copies 9 times each year! Our website has had almost 600,000 "hits" to date (11/2016). It also has a link to our most recent Church service which can be heard directly from the website or as a podcast. And our minister or session clerk always welcomes those listening at home or further afield. The recording is available for those without internet access through MP3 players supplied by the Church, although we need to ensure that this is more widely offered.
- ❖ Our new halls give us the opportunity to offer accommodation to additional organisations such as regular use by two Brownie Packs and one Guide Company, ad hoc NHS meetings and a regular Pilates exercise class. And we are always on the lookout for other local user groups since there are still available time slots. The new Killellan Halls also allow the Sunday Club to attend part of the church service and they provide suitable crèche accommodation. They are also invaluable for offering relevant accommodation for wedding and funeral services.
- ❖ We host ROAR (see page 44), a Mother and Toddler group, our senior citizen's group (Cameo Club), Brownies, Guides, Boys' and Girls' Brigades, the Guild, the Wee Blether and the country dancing group as well as various concerts and coffee mornings.
- ❖ This year we welcomed the Citizen's Theatre to our halls to produce an antisectarian play "The Divided City". The P7 pupils of Houston Primary and Saint Fillan's school's rehearsed and performed the play in the West Halls and it was a great success. The pupils felt it allowed them to get to know students from other schools who would be joining them at High School next year. It is hoped to repeat the event this year.
- ❖ Our minister is chaplain to Houston Primary School and has support from a youth worker based in Linwood. He conducts both a junior and senior assembly every four weeks or so, as well as a Christmas service. We host the Easter service and the valedictory service in our church.

He is part of the chaplaincy team for Gryffe High School with a minister from Bridge of Weir. His input includes attending a specific year group's assemblies monthly (the various year groups are allocated annually); takes Christmas and Easter Services (S1, S2 and S6 pupils go to the Kirk); helps with the Reflection Room, open for a week for Remembrance Day each November and at Easter.

Our minister also attends the Gryffe High Awards Ceremony conducting opening and closing prayer; and contributes to the "Big Question" Events (part of Religious, Moral & Philosophical Studies Higher Course)

- ❖ We offer “Starzone” sessions during school holidays which provide fun activities for any local children who wish to come along. These are well advertised through the local primary schools. Starzone is a children’s community outreach activity club that has been running for 10 years. It is available to children from P1 – P7. On average 20 -25 children attend.
We hold 2 days at Easter and 5 days over the summer break. It is lead by two young leaders who organize the programme, with the help of volunteers from the church.
Themes this summer were this Olympic Fun and Royal Celebration. Previously - The Circus and A Bugs Life.
- ❖ Our annual Kirk Carnival, as well as being a major fundraiser, is a real village affair with lots of participation in helping, and in enjoying the fun from local residents outwith our Church membership. It’s quite an event!
The local primary school chooses who are to be the Annual Kirk Carnival Queen and her attendants; and the local nurseries and primary school take part in the Carnival colouring competitions. All local children and youth organisations are invited and encouraged to join in the fancy dress competition and parade through the village led by the BB Pipe Band.



- ❖ Our rose garden is an open access space for those wishing a bit of quiet time for reflection or chat and is well used by the public.
- ❖ We take part in Renfrewshire’s Doors Open day each year with tea and coffee for visitors.
- ❖ We help to support the Friends group of our local Crossreach home which caters for those with dementia.
- ❖ We host a ROAR (Reaching Older Adults in Renfrewshire) club in the West Halls and provide volunteers for serving lunch and clearing up.
- ❖ Our pastoral care team is our response to the Gospel grounded in our call to love our neighbour. It is offering God’s love in action and concern for the well being of individuals within our community, whether in childhood, adolescence, adulthood, middle age or maturity. The team supports the Minister in meeting the pastoral needs of all members of the congregation.
- ❖ We collect warm outerwear and underwear for Glasgow City mission each autumn.
- ❖ Our Christmas Gift service supports Crossreach in its work in prisons by our donations of toys for prisoner’s children.

- ❖ We organise the “Kirk Postie” each Christmas, delivering cards locally with the proceeds going to a chosen charity. This year we delivered 3,500 items and raised £960 for Quarriers Countryview respite care for children with disabilities.
- ❖ We have an ongoing collection of food items for the local food bank, and our Harvest Thanksgiving supports the food bank as well. This year we had a special collection at Christmas and collected a car full of donations.
- ❖ We are a Fairtrade congregation and work with our local partners to promote Fairtrade goods during Fairtrade week and at other times – and we have 2 or 3 Fairtrade stalls a year in the Church after morning service.
- ❖ Further afield we support our Missionary Partners in Zambia in collaboration with our friends in St Andrews Presbytery. Our special emphasis is on the community in Mwandi. We share the cost of crated goods being sent as well as supplying monthly parcels of layettes to encourage new mothers to deliver in hospital (a part of the HIV/AIDS programme). We send at least £500 annually to help supply baby milk for the same programme and have sent solar calculators to help the upper school students with their studies. This latter will be an annual event. We are also supporting a dental student through his studies so that he may provide a dental service in Mwandi in the future. We use the regular Partner Plan letter from the Waddells on our website and in the “Record”; and we have various ad hoc fundraising as requested. We are just starting to raise money for solar lamps for school students so that they can do homework when it is dark (few homes with electricity, lots of down time and kerosene is dirty, expensive and dangerous).



Keith and Ida Waddell



By the river in Mwandi



Mwandi village

- ❖ Our contribution to Christian Aid is an important part of our outreach. We organise a door to door collection to each house in the parish each Christian Aid Week as well as many of our congregation filling “seed boxes” with coppers and loose change which raise several hundred pounds each year.

Taking all of the above into account, there are gaps we could fill but we try to fulfil our Mission and Outreach commitment broadly and generously with our time and our money, all based firmly in our faith.

APPENDIX F

Contacts

Interim Moderator	Convenor of nominating committee	Clerk to nominating committee	Session Clerk
Rev Stuart C Steell 0141-387-2464 e-mail: ssren@tiscali.co.uk	Mrs Helen Dunn e-mail: hmdunn18@gmail.com	Mrs Catriona Connelly 07930 338092 e-mail: theconnellys@btinternet.com	Mr Jim McBeath 01505-613763 e-mail: mcbeathgolf@aol.com

Kirk website	www.houstonkillellankirk.org
Kirk facebook page	www.facebook.com/houstonkillellankirk
Community Council facebook page (currently being updated)	www.houstonvillage.co.uk/
Abbey Nursery	www.abbey-nursery.co.uk/
Woodlands Day Nursery	www.woodlandsdaynursery.com
Houston Primary School and Nursery	www.houstonprimaryschool.com/
Gryffe High School	www.gryffehigh.com/
Local medical practice	www.houstonandbridgeofweirgpppractice.co.uk/
Renfrewshire Foodbank	www.renfrewshire.foodbank.org.uk/
Presbytery of Greenock and Paisley	www.presbofgreenockandpaisley.org
Kilallan Kirk Preservation Trust	www.kilallan.org
Archeology notes	www.canmore.org.uk/site/43103/houston-parish-church-and-churchyard
Houston's ancient yew tree	http://www.ancient-yew.org/treeInfo.php?link=1990